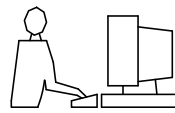


THIS IS A C.A.D. GENERATED DRAWING  
DO NOT MAKE MANUAL REVISIONS TO MASTER.

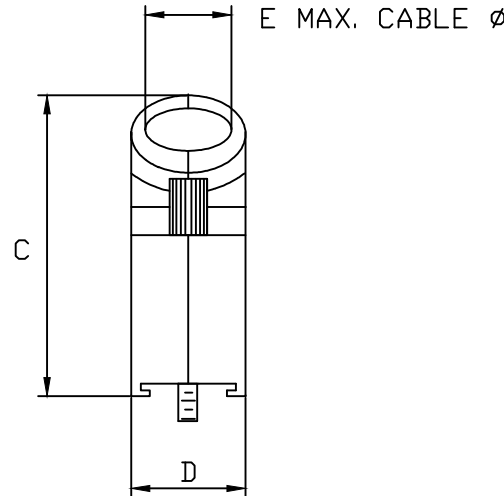
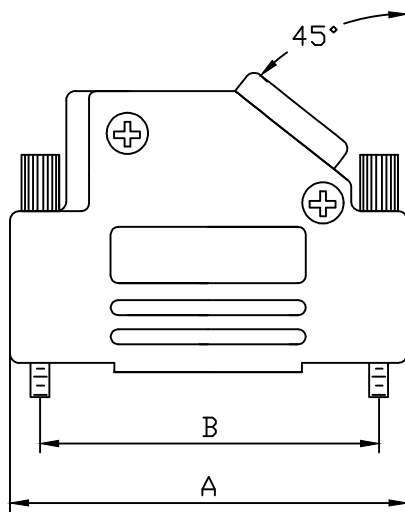


\* UNLESS OTHERWISE SPECIFIED TOLERANCES  
ON DECIMAL IS: ANGLE ±5°  
UNIT: MM X. ±0.38  
X.X ±0.25

**BACKSHELL KIT INCLUDES:**

- (2)BACKSHELL HALVES
- (2)4-40 THUMBSCREWS
- (2)HOUSING SCREWS
- (1)SET OF COMPRESSION INSERTS-(9 POSITION~37 POSITION)  
DIAMETERS:4mm(.157"),5mm(.197"),7mm(.276"),9mm(.351")

NOTE: 9 POSITION HAS ONLY 1 THUMBSCREW  
(OPPOSITE CABLE ENTRY)



| DIMENSIONS(mm/in) |                  |                   |                  |                  |      |
|-------------------|------------------|-------------------|------------------|------------------|------|
| SIZE              | A ±1.0<br>(±.04) | B ±0.25<br>(±.01) | C ±1.5<br>(±.06) | D ±0.5<br>(±.02) | E    |
| 9                 | 31.0             | 24.99             | 36.3             | 14.5             | 13.0 |
|                   | 1.22             | 0.984             | 1.43             | 0.57             | 0.51 |
| 15                | 39.5             | 33.32             | 40.3             | 14.5             | 13.0 |
|                   | 1.56             | 1.312             | 1.59             | 0.57             | 0.51 |
| 25                | 53.2             | 47.04             | 40.3             | 14.5             | 13.0 |
|                   | 2.09             | 1.852             | 1.59             | 0.57             | 0.51 |
| 37                | 69.7             | 63.50             | 40.3             | 14.5             | 13.0 |
|                   | 2.74             | 2.500             | 1.59             | 0.57             | 0.51 |

**ORDERING INFORMATION:**

| SIZE   | P/N - KITTED | PRODUCT CODE    |
|--------|--------------|-----------------|
| 9-WAY  | 6560-0116-11 | MHD45ZK-09-BK-K |
| 15-WAY | 6560-0116-12 | MHD45ZK-15-BK-K |
| 25-WAY | 6560-0116-13 | MHD45ZK-25-BK-K |
| 37-WAY | 6560-0116-14 | MHD45ZK-37-BK-K |

| SIZE   | P/N - BULK   | PRODUCT CODE  |
|--------|--------------|---------------|
| 9-WAY  | 6561-0116-11 | MHD45ZK-09-BK |
| 15-WAY | 6561-0116-12 | MHD45ZK-15-BK |
| 25-WAY | 6561-0116-13 | MHD45ZK-25-BK |
| 37-WAY | 6561-0116-14 | MHD45ZK-37-BK |

BACKSHELL MATERIAL: DIE-CAST ZINC ALLOY  
 PLATING: CLEAR CHROMATE FOLLOWED BY BLACK ENAMEL  
 4-40 THUMBSCREWS: STEEL - BLACK OXIDE FINISH  
 HOODSCREWS: STEEL - BLACK OXIDE FINISH  
 COMPRESSION INSERT: ABS UL RECOGNIZED  
 OPERATING TEMP: -40°C TO +120°C

THESE DRAWINGS AND SPECIFICATIONS ARE THE PROPERTY OF MH CONNECTORS AND SHALL NOT BE REPRODUCED, COPIED OR USED AS THE BASIS FOR THE MANUFACTURE OR SALE OF APPARATUS WITHOUT WRITTEN PERMISSION.

DRAWN: JOHNNY  
DATE: 07-21-15

APPROVED: DAMIEN  
DATE: 07-22-15

SCALE: 1 : 1  
SHEET OF: 1 OF 1  
REV: 2.0

DRAWING No: MHD45ZK-BK-SERIES



THIS SERIES FULLY CONFORMS TO THE EUROPEAN UNION DIRECTIVES 2002/95/EC AND 2002/96/EC FOR RoHS COMPLIANCY.



**MH CONNECTORS ,  
DIVISION OF EDAC**