

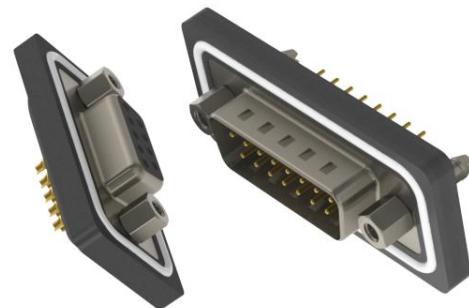
627W/628W SERIES



Waterproof D-Sub Connectors: Vertical

Features:

- 0.109"(2.77mm) contact spacing x 0.112"(2.82mm) row spacing
- Plug and receptacle in 9, 15, 25 or 37 contact sizes
- Pin and socket contact mating design with P.C. tail termination or solder cup termination
- Plug shell indents provide grounding and additional mating retention
- Grounding features include two prong boardlock for exceptional retention to P.C. board
- Mounting options for panel mount or connector mating include threaded inserts or threaded standoffs
- D-shaped connector mating outline provides polarization
- Degree of protection: IP67 as per IEC60529



Specifications:

Insulator Material	PBT Thermoplastic with 30% Glass Filled, UL 94V-0 Rated, Black color
Contact Material	Pins and Sockets: Copper Alloy
Contact Plating	Gold Plating over Nickel underplating
Shell Material	Nickel Plated Steel
Epoxy Sealant	Epoxy
O-Ring	Silicone
Current Rating	5 amps
Contact Resistance	10 Milliohms maximum
Dielectric Withstanding Voltage	5000 megahms minimum
Insulation Resistance	1000 V AC rms at Sea Level
Operating Temperature	-25°C To +85°C

Ordering Code:

627-W09-220-012

SERIES:
 627 - PLUG (PIN)
 628 - RECEPTACLE (SOCKET)

EDAC CODE:
 W - WATERPROOF

NO. OF CONTACTS:
 09 - 9 CONTACTS
 15 - 15 CONTACTS
 25 - 25 CONTACTS
 37 - 37 CONTACTS

CONTACT PLATING:
 2 - GOLD FLASH PLATING
 3 - 15µ" OF GOLD PLATING
 6 - 30µ" OF GOLD PLATING

MOUNTING OPTION:
 2 - #4-40 UNC THREADED HOLE
 3 - RIVETED #4-40 UNC BOARDLOCKS
 (ONLY AVAILABLE WITH CONTACT CODE 20)

NOTE: ALL CONNECTORS ARE SHIPPED WITH
 #4-40 UNC HEXAGON SCREWS
 (PACKED SEPARATELY)

SHELL OPTIONS:
 1 - NICKEL PLATED

INSULATOR COLOR:
 0 - BLACK

CONTACT CODE:
 20 - PC TAIL (LENGTH = 3.50mm)
 21 - PC TAIL (LENGTH = 14.95mm)
 22 - SOLDER CUP TERMINATION