

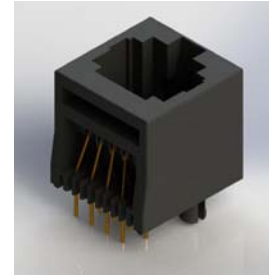
# J20 SERIES



MODULAR JACK CONNECTORS: SINGLE PORT RJ45,  
VERTICAL PCB MOUNT, NON-SHIELDED, 6.35mm FOOTPRINT (16.4mm BODY)

## Features:

- Top performance for high speed networking, voice and data applications
- Meet FCC PART 68, Subpart F requirements
- Applications: Telecommunications, Broadcast, Data Products
- RoHS Compliant



## Specifications:

Insulator Material	PBT or Nylon
Contact Material	Phosphor Bronze
Contact Plating	Gold Plating on contact area and Tin Plating on tails with Nickel underplating all over
Current Rating	1.5 amps @25°C
Contact Resistance	20 milliohms maximum
Dielectric Withstanding Voltage	1000 V AC
Insulation Resistance	500 megaohms minimum
Durability	750 cycles minimum
Operating Temperature	-40°C to +85°C
Wave Soldering Process	260°C ± 5°C, 5~10 Seconds

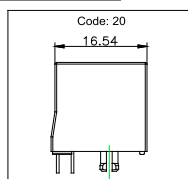
## Ordering Code:

EXAMPLE PART NUMBER: **J20018821P00031**

SERIES:  
RJ MODULAR JACK

HOUSING TYPE:

20-



NO. OF PORTS:  
01 - 1 PORT

NO. OF CONTACTS PER PORT:  
88 - 8P8C

CONTACT PLATING:  
2 - GOLD FLASH  
3 - 15 MICROINCHES OF GOLD  
6 - 30 MICROINCHES OF GOLD  
9 - 50 MICROINCHES OF GOLD

CONTACT TAIL TYPE:  
1 - VERTICAL PCB

HOUSING MATERIAL:  
P - PBT  
N - NYLON

MOUNTING OPTIONS:  
1 - BOARD LOCKS

PORT TYPE:  
3 - SINGLE ROW (VERTICAL)

SHIELDING:  
0 - NO SHIELD

RIGHT LED COLOR:  
0 - NO LED

LEFT LED COLOR:  
0 - NO LED